

# Sphinx Stone





Royal Collection



Royal Collection



Royal Collection

Royal Collection



Royal Collection



Royal Collection



Royal Collection



Royal Collection



Royal Collection

Royal Collection



Royal Collection



Royal Collection



Royal Collection



Royal Collection



Royal Collection

Royal Collection



Royal Collection



Royal Collection



Royal Collection



Royal Collection



Royal Collection

Royal Collection



Royal Collection



Royal Collection



Royal Collection



Royal Collection



Royal Collection



Royal Collection



Royal Collection



Royal Collection

Royal Collection



Royal Collection



Royal Collection



Royal Collection



Royal Collection



Royal Collection

Royal Collection



Royal Collection



Royal Collection



Royal Collection



Royal Collection



Royal Collection

Royal Collection



Royal Collection



Royal Collection



Royal Collection



Royal Collection



Royal Collection

Royal Collection



Royal Collection



Royal Collection



Royal Collection



Royal Collection



Royal Collection

Royal Collection

# Sphinx Stone

**vloer/wandtegels**  
floor/wall tiles  
carreaux pour mur et sol  
Bodenfliesen/Wandfliesen

<b>60x120</b>	24"x48"
<b>30x120</b>	12"x48"
<b>75x75</b>	30"x30"
<b>25x75</b>	10"x30"
<b>60x60</b>	24"x24"
<b>30x60</b>	12"x24"
<b>20x60</b>	8"x24"
<b>20x20</b>	8"x8"
<b>20x5</b>	8"x2"
<b>30x30</b>	12"x12" mosaic



**Sphinx**  
TILES SINCE 1888





# Sphinx Stone

Ontdek de mystieke schoonheid van Moeder Aarde zelf, als uniek resultaat van een miljoenen jaren oude geografische kringloop waarop ijs tijden, klimaatveranderingen, planten en dieren voor eeuwig hun stempel drukten. Ongeëvenaarde vormgeving, met moderne technologie vertaald naar hoogwaardige keramische tegels. De natuurlijke kleuren, dieptewerking en reliëfs maken de SPHINX STONE geschikt voor klassieke én moderne toepassingen, zowel binnen als buiten.

Découvrez la beauté mystique de notre mère la terre, ce résultat unique de millions d'années de cycles géographiques dans lesquels les périodes glaciaires, changements climatiques, plantes et animaux ont à jamais laissé leur empreinte. Une conception inégalée combinée à une technologie moderne, le tout traduit dans des carreaux en céramique de qualité supérieure. Les couleurs naturelles, effets de profondeur et reliefs font de SPHINX STONE le carreau idéal pour des applications classiques ou modernes, à l'intérieur comme à l'extérieur.

Discover the mystical beauty of Mother Earth herself: the result of an ancient geographical cycle shaped by ice ages, climate changes, plants, and animals. We harness modern technology to turn unmatched designs into high-quality ceramic tiles. The natural colours, depth effect, and reliefs and textures make the SPHINX STONE perfect for both modern and classic interior and outdoor designs.

Erleben Sie die mystische Schönheit von Mutter Erde als einzigartiges Resultat eines Millionen Jahre alten geografischen Kreislaufs, dem Eiszeiten, Klimaveränderungen, Pflanzen und Tiere für immer ihren Stempel aufgedrückt haben. Unvergleichliches Design wird anhand moderner Technologie in hochwertige keramische Fliesen umgesetzt. Die natürlichen Farben, Tiefenwirkung und Reliefs sorgen dafür, dass die SPHINX STONE Fliesen für klassische und moderne Anwendungen im Innen- und Außenbereich geeignet sind.



Royal Collection **STONE** black/white





Royal Collection **STONE** grey

Royal Collection **STONE** white

# Royal Collection **STONE** white



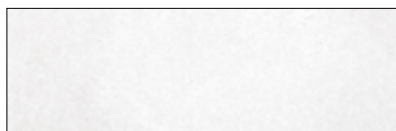
<b>TD4100</b>	white	<b>V2</b>	<b>M</b>
<b>75x75</b>	751 x 751 x 10	<b>1,78</b>	<b>2</b>
30"x30"	VR   V   R10 A+B		<b>47,2</b>
<b>M 210</b>			



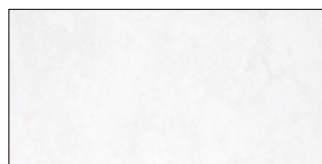
<b>KK4100</b>	white	<b>V2</b>	<b>M</b>
<b>60x60</b>	598 x 598 x 10	<b>2,78</b>	<b>3</b>
24"x24"	VR   V   R10 A+B		<b>43,2</b>
<b>M 140</b>			



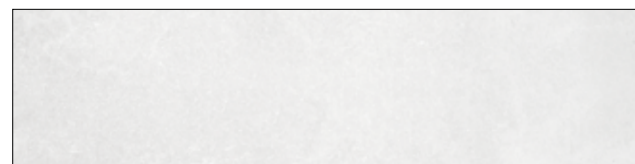
<b>TB4100</b>	white	<b>V2</b>	<b>M</b>
<b>60x120</b>	598 x 1198 x 10	<b>1,39</b>	<b>2</b>
24"x48"	VR   V   R10 A+B		<b>34,6</b>
<b>M 210</b>			



<b>TE4100</b>	white	<b>V2</b>	<b>M</b>
<b>25x75</b>	248 x 751 x 10	<b>5,34</b>	<b>6</b>
10"x30"	VR   V   R10 A+B		<b>47,2</b>
<b>M 225</b>			

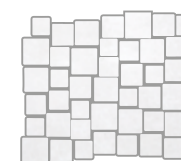


<b>XK4100</b>	white	<b>V2</b>	<b>M</b>
<b>30x60</b>	298 x 598 x 10	<b>5,55</b>	<b>6</b>
12"x24"	VR   V   R10 A+B		<b>43,2</b>
<b>M 140</b>			



<b>TC4100</b>	white	<b>V2</b>	<b>M</b>
<b>30x120</b>	298 x 1198 x 10	<b>2,78</b>	<b>4</b>
12"x48"	VR   V   R10 A+B		<b>34,6</b>
<b>M 225</b>			

mozaïek | mosaik  
mosaïque | mosaik



op net  
on net  
sur net  
netzverklebt

<b>MM4100</b>	white	<b>V2</b>	<b>M</b>
<b>30x30</b>	330 x 287 x 10	<b>10,55</b>	<b>6</b>
12"x12"	VR   V   R10 A+B		
<b>S 330</b>			

plint | skirting | plinthe | sockel

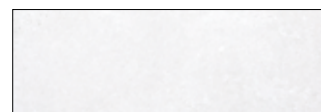


<b>JH4100</b>	white	<b>V2</b>	<b>M</b>
<b>8x75</b>	80 x 751 x 10		<b>10</b>
3,2"x30"	P	<b>1,34</b>	
<b>S 147</b>			

plint | skirting | plinthe | sockel



<b>JK4100</b>	white	<b>V2</b>	<b>M</b>
<b>8x60</b>	80 x 598 x 10		<b>10</b>
3,2"x24"	P	<b>1,7</b>	
<b>S 131</b>			



<b>MC4100</b>	white	<b>V2</b>	<b>M</b>
<b>20x60</b>	198 x 598 x 10	<b>8,3</b>	<b>8</b>
8"x24"	VR   V   R10 A+B		<b>27,0</b>
<b>M 175</b>			



<b>LK4100</b>	white [decor]	<b>V2</b>	<b>M</b>
<b>20x20</b>	198 x 198 x 10	<b>25</b>	<b>30</b>
8"x8"	VR   V   R10 A+B	<b>5</b>	<b>43,2</b>
<b>M 210</b>			



<b>CK4100</b>	white	<b>V2</b>	<b>M</b>
<b>20x5</b>	48 x 198 x 10	<b>100</b>	<b>11</b>
8"x2"	VR   V   R10 A+B	<b>5</b>	
<b>M 245</b>			



Royal Collection **STONE** grey

# Royal Collection **STONE** grey



<b>TD4110</b>	grey	<b>V2</b>	<b>M</b>
<b>75x75</b>	751 x 751 x 10	<b>1,78</b>	<b>2</b>
30"x30"	VR   V   R10 A+B		<b>47,2</b>
<b>M 210</b>			



<b>KK4110</b>	grey	<b>V2</b>	<b>M</b>
<b>60x60</b>	598 x 598 x 10	<b>2,78</b>	<b>3</b>
24"x24"	VR   V   R10 A+B		<b>43,2</b>
<b>M 140</b>			



<b>TB4110</b>	grey	<b>V2</b>	<b>M</b>
<b>60x120</b>	598 x 1198 x 10	<b>1,39</b>	<b>2</b>
24"x48"	VR   V   R10 A+B		<b>34,6</b>
<b>M 210</b>			



<b>TE4110</b>	grey	<b>V2</b>	<b>M</b>
<b>25x75</b>	248 x 751 x 10	<b>5,34</b>	<b>6</b>
10"x30"	VR   V   R10 A+B		<b>47,2</b>
<b>M 225</b>			

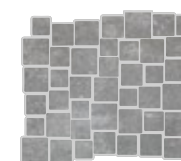


<b>XK4110</b>	grey	<b>V2</b>	<b>M</b>
<b>30x60</b>	298 x 598 x 10	<b>5,55</b>	<b>6</b>
12"x24"	VR   V   R10 A+B		<b>43,2</b>
<b>M 140</b>			



<b>TC4110</b>	grey	<b>V2</b>	<b>M</b>
<b>30x120</b>	298 x 1198 x 10	<b>2,78</b>	<b>4</b>
12"x48"	VR   V   R10 A+B		<b>34,6</b>
<b>M 225</b>			

mozaïek | mosaik  
mosaïque | mosaik



op net  
on net  
sur net  
netzverklebt

<b>MM4110</b>	grey	<b>V2</b>	<b>M</b>
<b>30x30</b>	330 x 287 x 10	<b>10,55</b>	<b>6</b>
12"x12"	VR   V   R10 A+B		
<b>S 330</b>			

plint | skirting | plinthe | sockel



<b>JH4110</b>	grey	<b>V2</b>	<b>M</b>
<b>8x75</b>	80 x 751 x 10		<b>10</b>
3,2"x30"	P	<b>1,34</b>	
<b>S 147</b>			

plint | skirting | plinthe | sockel



<b>JK4110</b>	grey	<b>V2</b>	<b>M</b>
<b>8x60</b>	80 x 598 x 10		<b>10</b>
3,2"x24"	P	<b>1,7</b>	
<b>S 131</b>			



<b>MC4110</b>	grey	<b>V2</b>	<b>M</b>
<b>20x60</b>	198 x 598 x 10	<b>8,3</b>	<b>8</b>
8"x24"	VR   V   R10 A+B		<b>27,0</b>
<b>M 175</b>			



<b>LK4110</b>	grey [decor]	<b>V2</b>	<b>M</b>
<b>20x20</b>	198 x 198 x 10	<b>25</b>	<b>30</b>
8"x8"	VR   V   R10 A+B	<b>5</b>	<b>43,2</b>
<b>M 210</b>			



<b>CK4110</b>	grey	<b>V2</b>	<b>M</b>
<b>20x5</b>	48 x 198 x 10	<b>100</b>	<b>11</b>
8"x2"	VR   V   R10 A+B	<b>5</b>	
<b>M 245</b>			

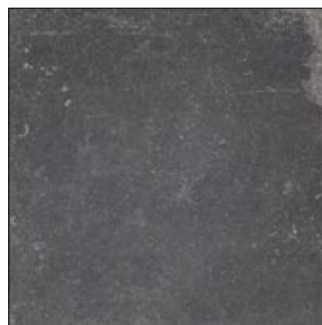


Royal Collection **STONE** black

# Royal Collection **STONE** black



<b>TD4120</b>	black	<b>V2</b>	<b>M</b>
<b>75x75</b>	751 x 751 x 10	<b>1,78</b>	<b>2</b>
30"x30"	VR   V   R10 A+B		<b>47,2</b>
<b>M 210</b>			



<b>KK4120</b>	black	<b>V2</b>	<b>M</b>
<b>60x60</b>	598 x 598 x 10	<b>2,78</b>	<b>3</b>
24"x24"	VR   V   R10 A+B		<b>43,2</b>
<b>M 140</b>			



<b>TB4120</b>	black	<b>V2</b>	<b>M</b>
<b>60x120</b>	598 x 1198 x 10	<b>1,39</b>	<b>2</b>
24"x48"	VR   V   R10 A+B		<b>34,6</b>
<b>M 210</b>			



<b>TE4120</b>	black	<b>V2</b>	<b>M</b>
<b>25x75</b>	248 x 751 x 10	<b>5,34</b>	<b>6</b>
10"x30"	VR   V   R10 A+B		<b>47,2</b>
<b>M 225</b>			

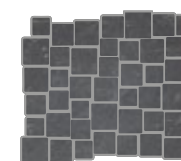


<b>XK4120</b>	black	<b>V2</b>	<b>M</b>
<b>30x60</b>	298 x 598 x 10	<b>5,55</b>	<b>6</b>
12"x24"	VR   V   R10 A+B		<b>43,2</b>
<b>M 140</b>			



<b>TC4120</b>	black	<b>V2</b>	<b>M</b>
<b>30x120</b>	298 x 1198 x 10	<b>2,78</b>	<b>4</b>
12"x48"	VR   V   R10 A+B		<b>34,6</b>
<b>M 225</b>			

mozaïek | mosaik  
mosaïque | mosaik



op net  
on net  
sur net  
netzverklebt

<b>MM4120</b>	black	<b>V2</b>	<b>M</b>
<b>30x30</b>	330 x 287 x 10	<b>10,55</b>	<b>6</b>
12"x12"	VR   V   R10 A+B		
<b>S 330</b>			

plint | skirting | plinthe | sockel

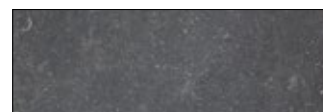


<b>JH4120</b>	black	<b>V2</b>	<b>M</b>
<b>8x75</b>	80 x 751 x 10		<b>10</b>
3,2"x30"	P	<b>1,34</b>	
<b>S 147</b>			

plint | skirting | plinthe | sockel



<b>JK4120</b>	black	<b>V2</b>	<b>M</b>
<b>8x60</b>	80 x 598 x 10		<b>10</b>
3,2"x24"	P	<b>1,7</b>	
<b>S 131</b>			



<b>MC4120</b>	black	<b>V2</b>	<b>M</b>
<b>20x60</b>	198 x 598 x 10	<b>8,3</b>	<b>8</b>
8"x24"	VR   V   R10 A+B		<b>27,0</b>
<b>M 175</b>			



<b>LK4120</b>	black [decor]	<b>V2</b>	<b>M</b>
<b>20x20</b>	198 x 198 x 10	<b>25</b>	<b>30</b>
8"x8"	VR   V   R10 A+B	<b>5</b>	<b>43,2</b>
<b>M 210</b>			



<b>CK4120</b>	black	<b>V2</b>	<b>M</b>
<b>20x5</b>	48 x 198 x 10	<b>100</b>	<b>11</b>
8"x2"	VR   V   R10 A+B	<b>5</b>	
<b>M 245</b>			



Royal Collection **STONE** black/white

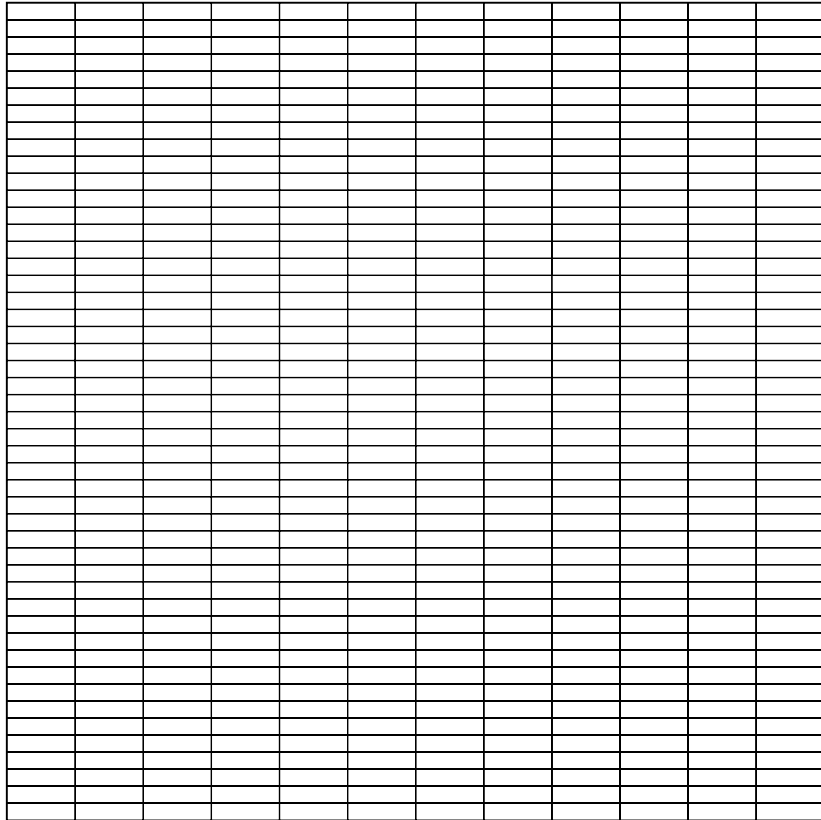




Royal Collection **STONE** grey

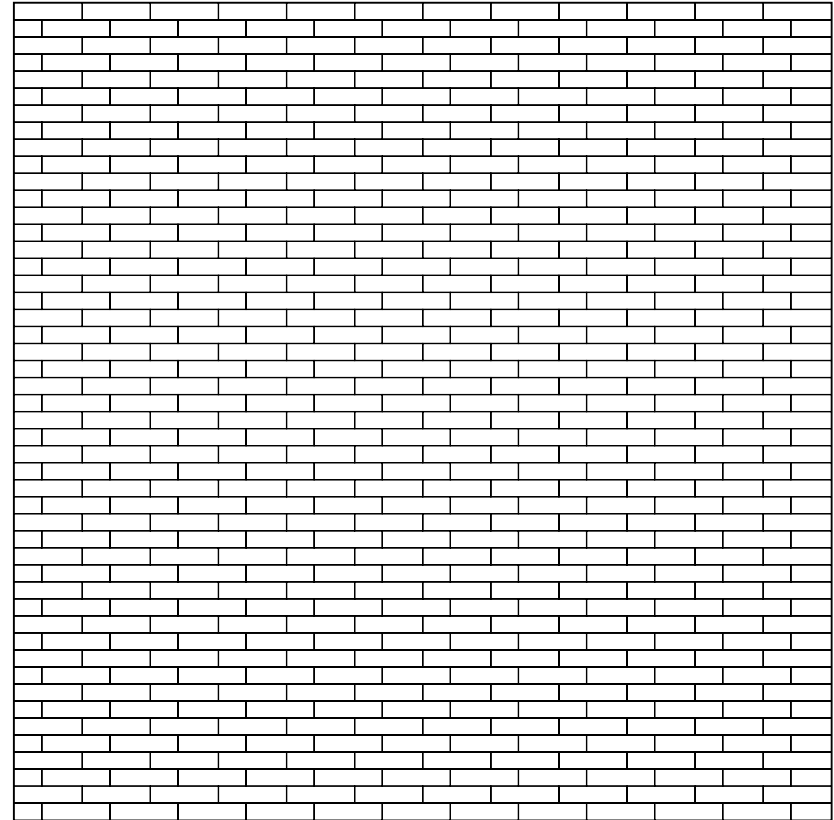
# Verwerkingspatronen

Poses  
Application patterns  
Verlegebeispiele



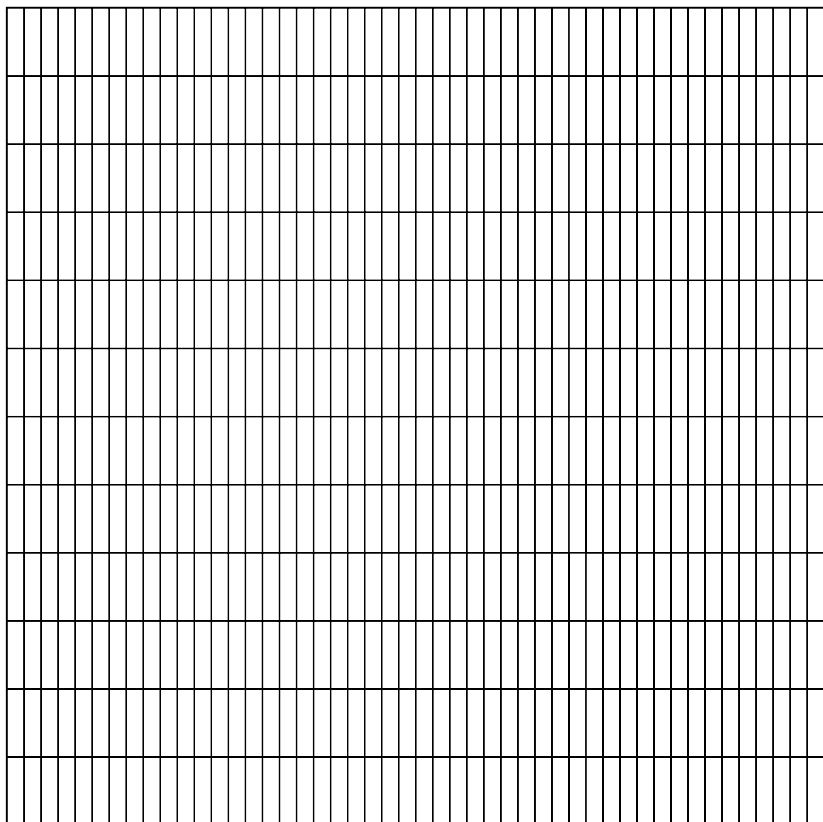
5x20 cm

100% (M2 | sqm | QM)



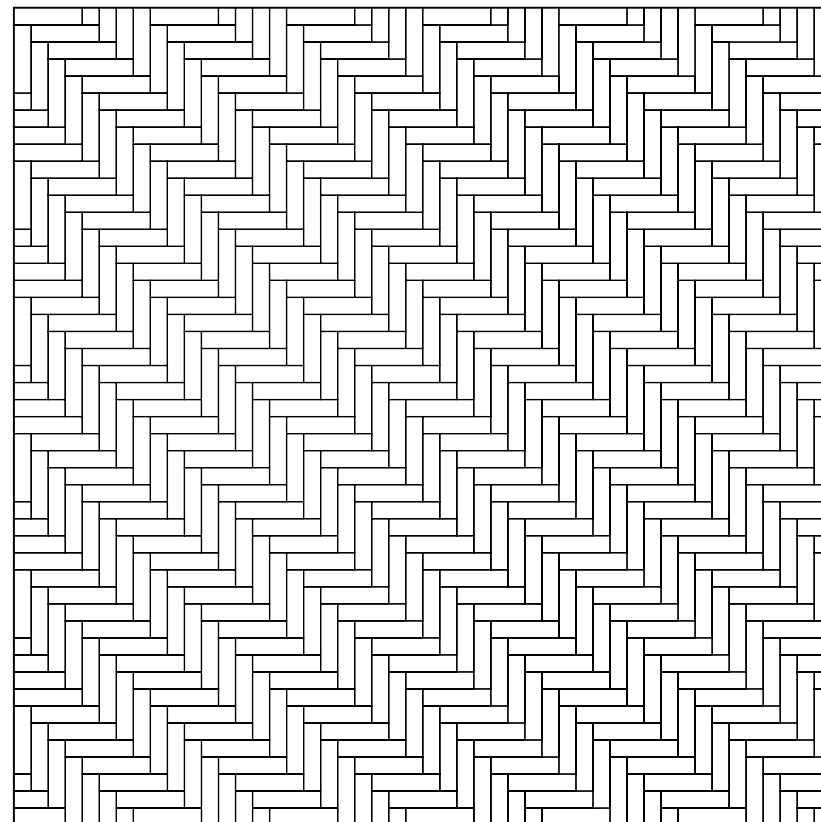
5x20 cm

100% (M2 | sqm | QM)



5x20 cm

100% (M2 | sqm | QM)

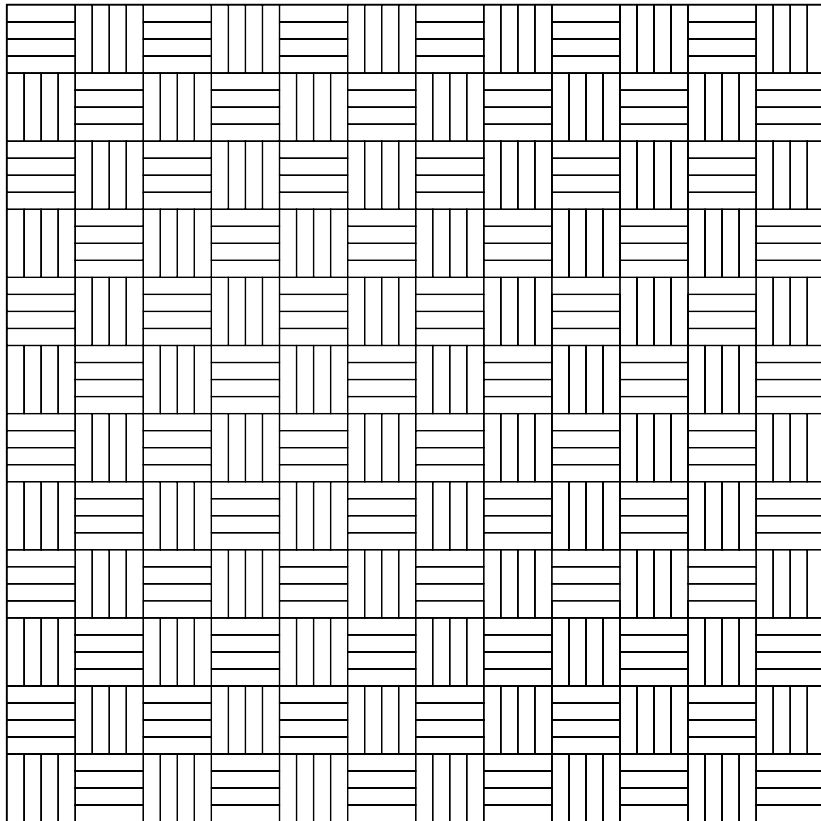


5x20 cm

100% (M2 | sqm | QM)

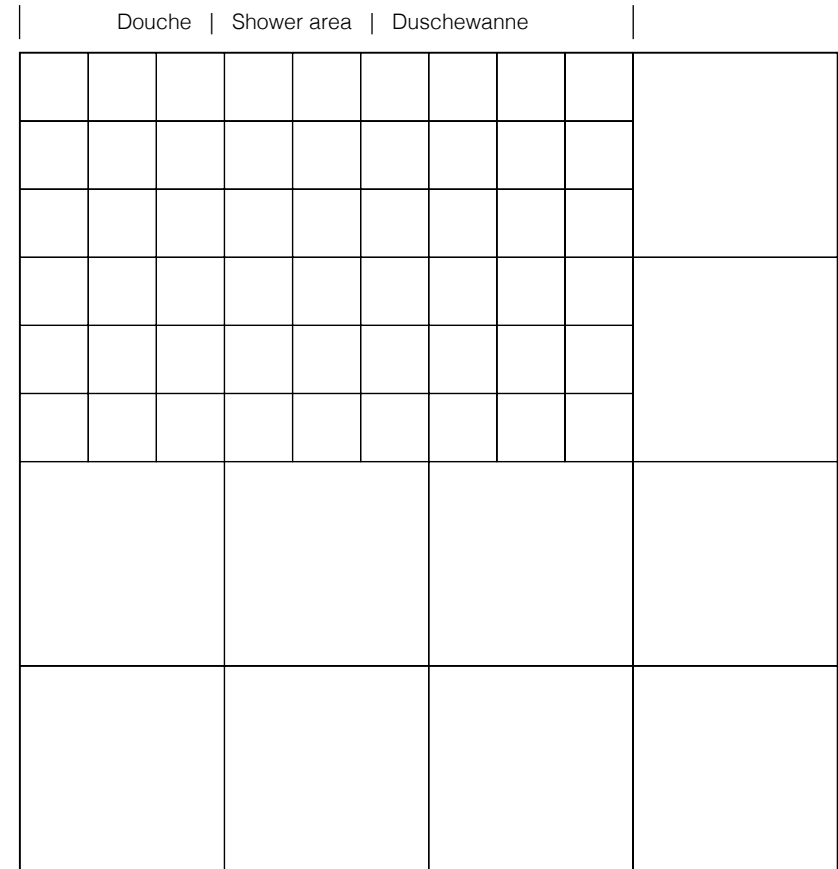
# Verwerkingspatronen

Poses  
Application patterns  
Verlegebeispiele



5x20 cm

100% (M2 | sqm | QM)



20x20 / 60x60 cm

X% / Y% (M2 | sqm | QM)





Royal Collection **STONE** white [ mosaic ]

# Uitleg productinformatie

Key to information

Guide pour la lecture des informations

Anleitung zum Lesen der Informationen



## Kader onder productafbeelding

Box under product image

Cadre sous la représentation du produit

Rahmen unter Produktbeschreibung

<b>ARTIKELCODE</b> <b>ITEM CODE</b> <b>NUMÉRO D'ARTICLE</b> <b>ARTIKELNUMMER</b>	Kleur Colour Couleur Farbe				<b>Colour Shade</b> <b>Variation</b> <b>[V1-V4]</b>	<b>G = glans / M = mat</b> <b>G = glossy / M = satin</b> <b>G = brillant / M = mat</b> <b>G = glänzend / M = matt</b>
<b>Formaat in cm</b> <b>Size in cm</b> <b>Dimensions en cm</b> <b>Nennmass in cm</b>	Werkmaat in mm (l x b x h) Work size in mm (l x w x th) Dimension de fabrication en mm (h x l x é) Werkmass in mm (L x B x D)				<b>Stuks per m²</b> <b>Pieces per sqm</b> <b>Pièces par m²</b> <b>Stück pro QM</b>	<b>Stuks / sets per doos</b> <b>Pieces per box</b> <b>Pièces / ensembles par boîte</b> <b>Stück pro Karton</b>
Formaat in inches Size in inches Dimensions en inches Nennmass in inches	W/V/S/P WR/VR/SR	Slijtclassé Abrasion resistance Classe d'abrasion Abriebklasse	Antislip-klasse Antislip class Classe anti-dérapante Rutsch-hemmung lt. <b>DIN 51130</b>	Antislip-klasse Antislip class Classe anti-dérapante Rutsch-hemmung lt. <b>DIN 51097</b>	<b>Stuks per m¹</b> <b>Pieces per lm</b> <b>Pièces par ml</b> <b>Stück pro LM</b>	<b>m² per pallet</b> <b>sqm per pallet</b> <b>m² par palette</b> <b>QM pro palette</b>
<b>PRIJSGROEP</b> <b>PRICE GROUP</b> <b>GROUPE DE PRIX</b> <b>PREISGRUPPE</b>						

W = wandtegel

V = vloertegel

S = stripe

P = plint

WR, VR, SR = gectificeerd

W = wall tile

V = floor tile

S = stripe

P = skirting

WR, VR, SR = rectifié

W = carrelage mural

V = carreau de sol

S = frise

P = plinthe

WR, VR, SR = rectifié

W = Wandfliese

V = Bodenfliese

S = Streife

P = Sockel

WR, VR, SR = Rektifiziert

Sphinx Tegels worden uitsluitend geleverd onder de Algemene Verkoopvoorwaarden van Dutch Tiles B.V. Aan de inhoud van deze brochure kunnen geen rechten worden ontleend.

Sphinx Tiles are supplied exclusively according to the General Terms and Conditions of Dutch Tiles B.V. No rights may be derived from the contents of this brochure.

Les carreaux Sphinx Carreaux sont uniquement livrés conformément aux conditions générales de vente de Dutch Tiles B.V. Aucun droit ne peut être tiré du contenu de cette brochure.

Sphinx Fliesen werden ausschließlich unter Geltung der Allgemeinen Verkaufsbedingungen der Dutch Tiles B.V. geliefert. Dem Inhalt dieser Broschüre können keine Rechte entlehnt werden.



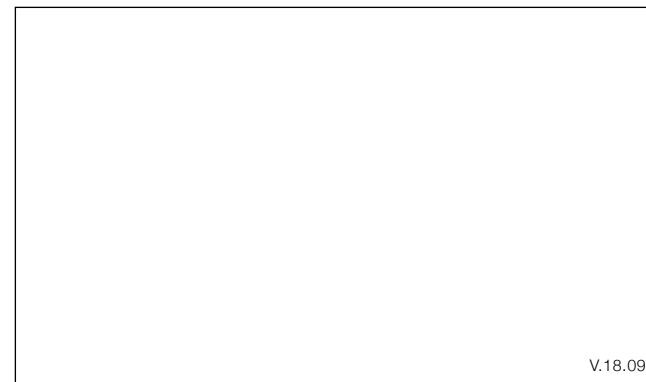
DUTCH TILES B.V.

P.O. box 510  
6190 BA Beek  
The Netherlands

T +31 (0)43 368 34 34  
F +31 (0)43 363 56 22

[www.sphinxtegels.nl](http://www.sphinxtegels.nl)  
[sales@sphinxtegels.nl](mailto:sales@sphinxtegels.nl)

For premium dealers, please visit our website.



V.18.09