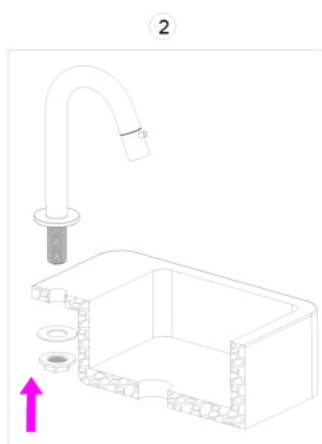
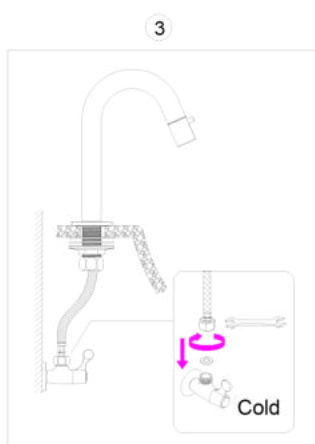


1. Remove nut and gasket from spout.



2. Fixed the spout into the mounting hole and install the gasket and lock nut at the bottom.



3. Install the two side connector of the hose on the faucet and valve.



4. After installation, swing the outlet pipe from side to side and test whether each connection is leaking or not.

Maintenance

(1) To keep the surface of the faucet bright and clean, please clean the faucet regularly.

1. Clean with water frequently with Soft cotton cloth, colorless glass cleaner, do not have grind action.

2. Do not use acidic detergents, which can erode surface coatings.

3. Do not use cleaning powder or polishing powder containing coarse particles of detergent or nylon brush, in order to avoid wearing out products.