

Dryphon upgrade set



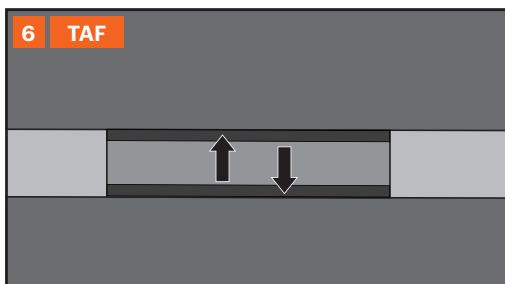
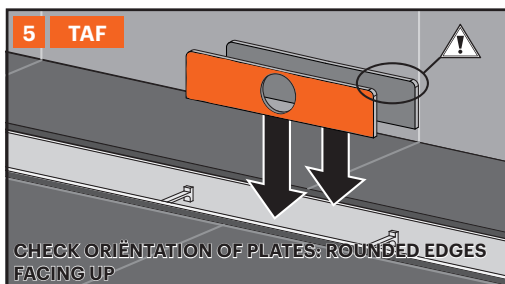
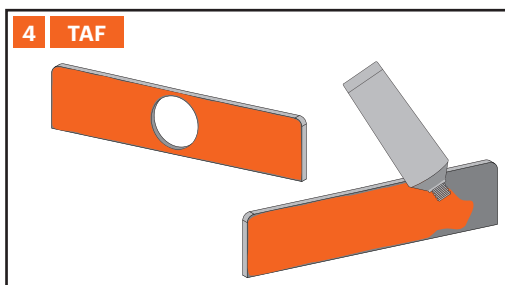
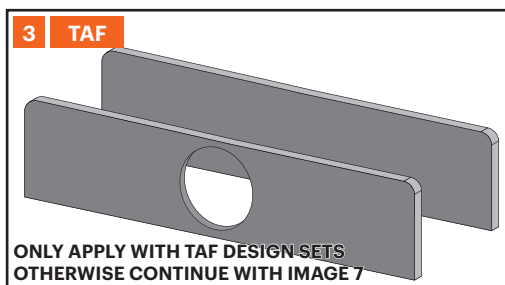
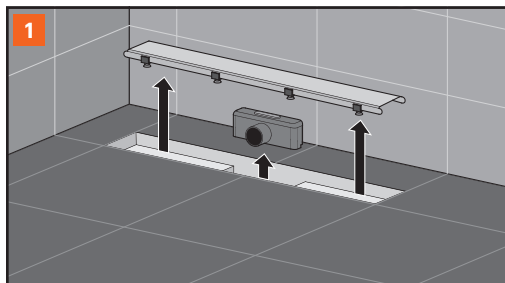
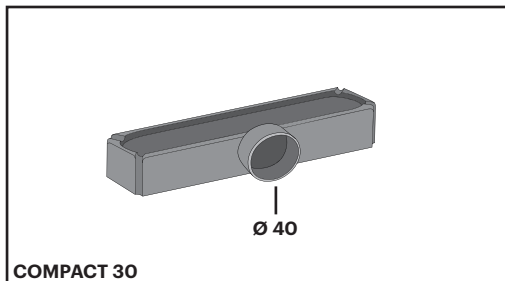
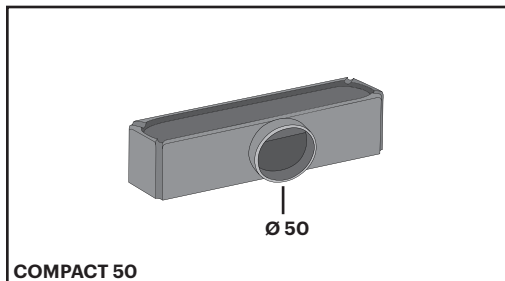
INSTALLATION ADVICE

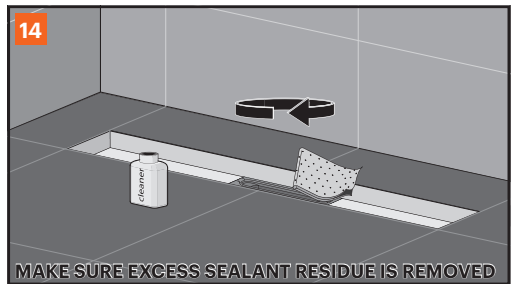
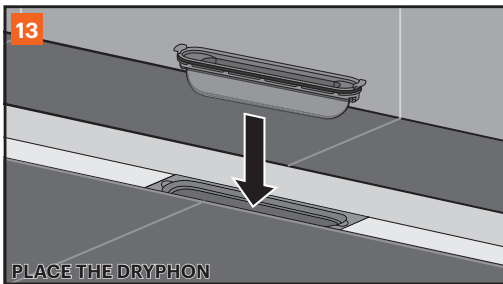
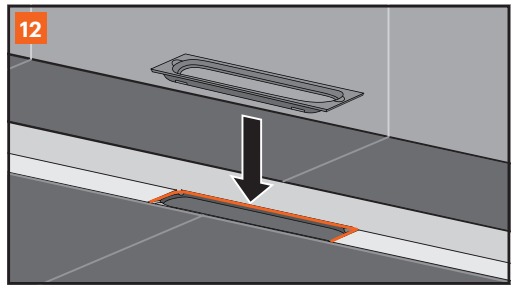
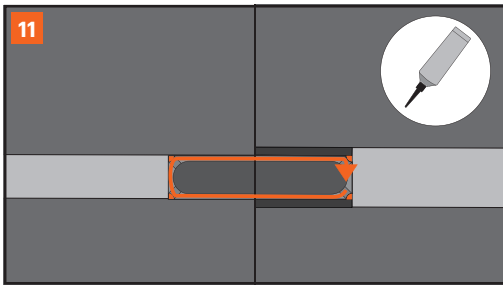
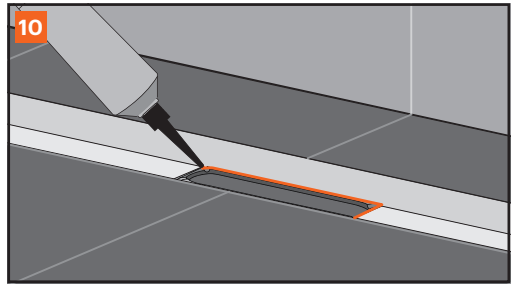
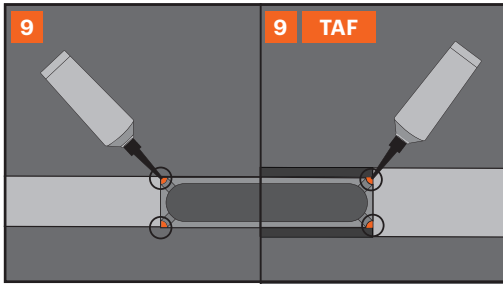
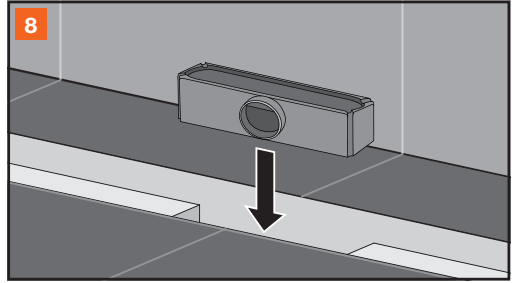
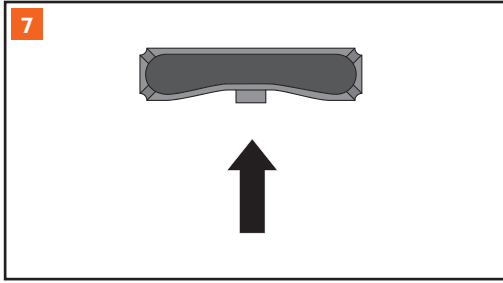
- UK Installation advice
- DE Einbauempfehlung
- NL Inbouwadvies
- DK Montagevejledning
- NO Innbyggingsråd
- ES Consejo para la instalación
- PT Conselho de instalação
- IT Consigli di montaggio
- FR Conseils de montage
- PL Zalecenia dotyczące wbudowania

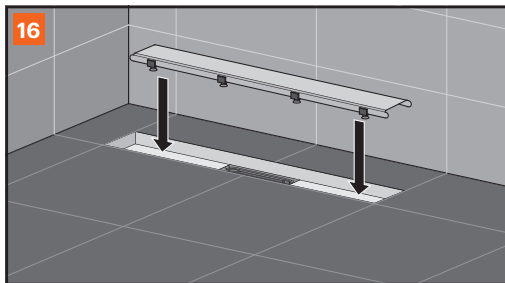
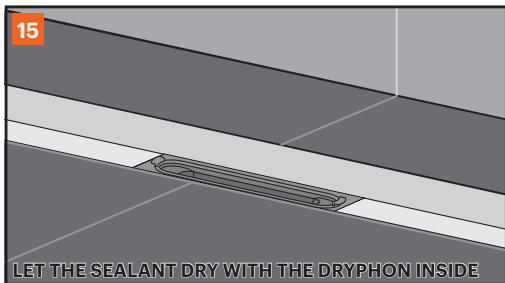
INSTALLATION GUIDE

Einbauempfehlung
Inbouwhandleiding
Montagevejledning
Innbyggingsveiledning

Manual de instalación
Instruções de instalação
Istruzioni di montaggio
Explications de montage
Instrukcja wmontowania







SIPHON CLEANING

Siphon reinigung

Sifon reiniging

Rengøring af vandlås

Vannlåsrengjøring

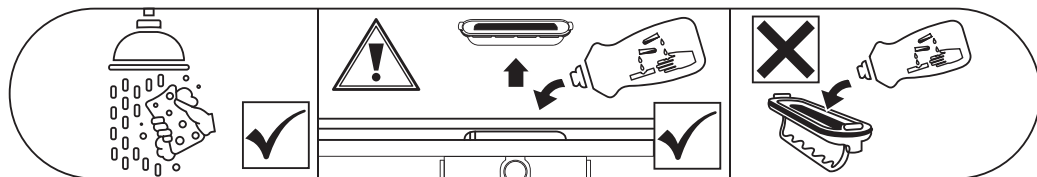
Limpeza sifon

Limpeza do sifão

Pulizia del sifone

Nettoyage du siphon

Czyszczenie syfonu



- UK** • Before cleaning, remove all parts of the siphon and clean them separately using only mild cleaning products.
- DE** • Entfernen Sie vor der Reinigung alle Teile des Siphons und reinigen Sie diese separat und nur mit milden Reinigungsmitteln.
- NL** • Verwijder voor het schoonmaken alle onderdelen van het sifon en reinig deze apart en alleen met milde reinigingsproducten
- DK** • Fjern alle dele af sifonen inden rengøring, og rengør dem separat med kun milderengøringsprodukter.
- NO** • Fjern alle deler av sifonen før rengjøring, og rengjør dem separat med bare milde rengjøringsmidler.
- ES** • Antes de limpiar, retire todas las partes del sifón y límpielas por separado usando sólo productos de limpieza suaves.
- PT** • Antes de limpar, remover todas as partes do sifão e limpá-las separadamente utilizando apenas produtos de limpeza suaves.
- IT** • Prima della pulizia, rimuovere tutte le parti del sifone e pulirle separatamente utilizzando solo prodotti per la pulizia delicati.
- FR** • Avant le nettoyage, retirez toutes les parties du siphon et nettoyez-les séparément en utilisant uniquement des produits de nettoyage doux.
- PL** • Przed czyszczeniem należy wyjąć wszystkie części syfonu i wyczyścić je oddzielnie, używając wyłącznie łagodnych środków czyszczących.

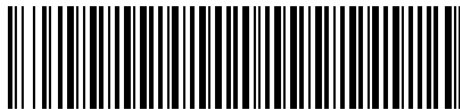


Manufacturer:

Easy Sanitary Solutions

Nijverheidsstraat 60
7575 BK Oldenzaal, The Netherlands
tel: +31 (0)541 200800
email: info@esspost.com
www.easydrain.com

ESS PRODUCTS ARE PATENTED AND REGISTERED TRADEMARKS MADE BY ESS



E60.03.12.00.36