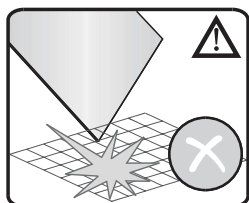
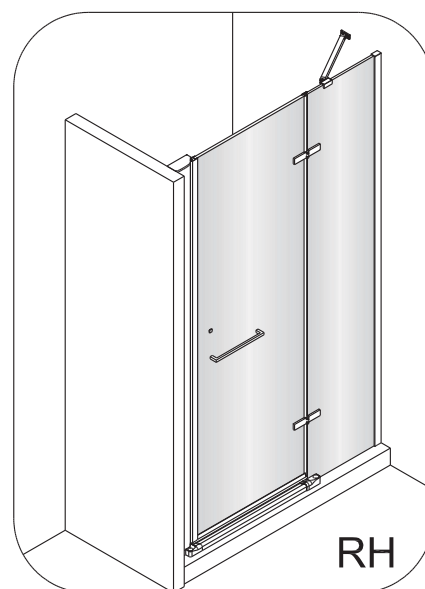
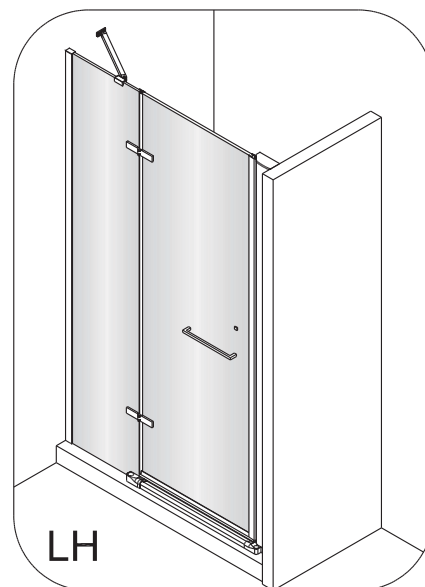
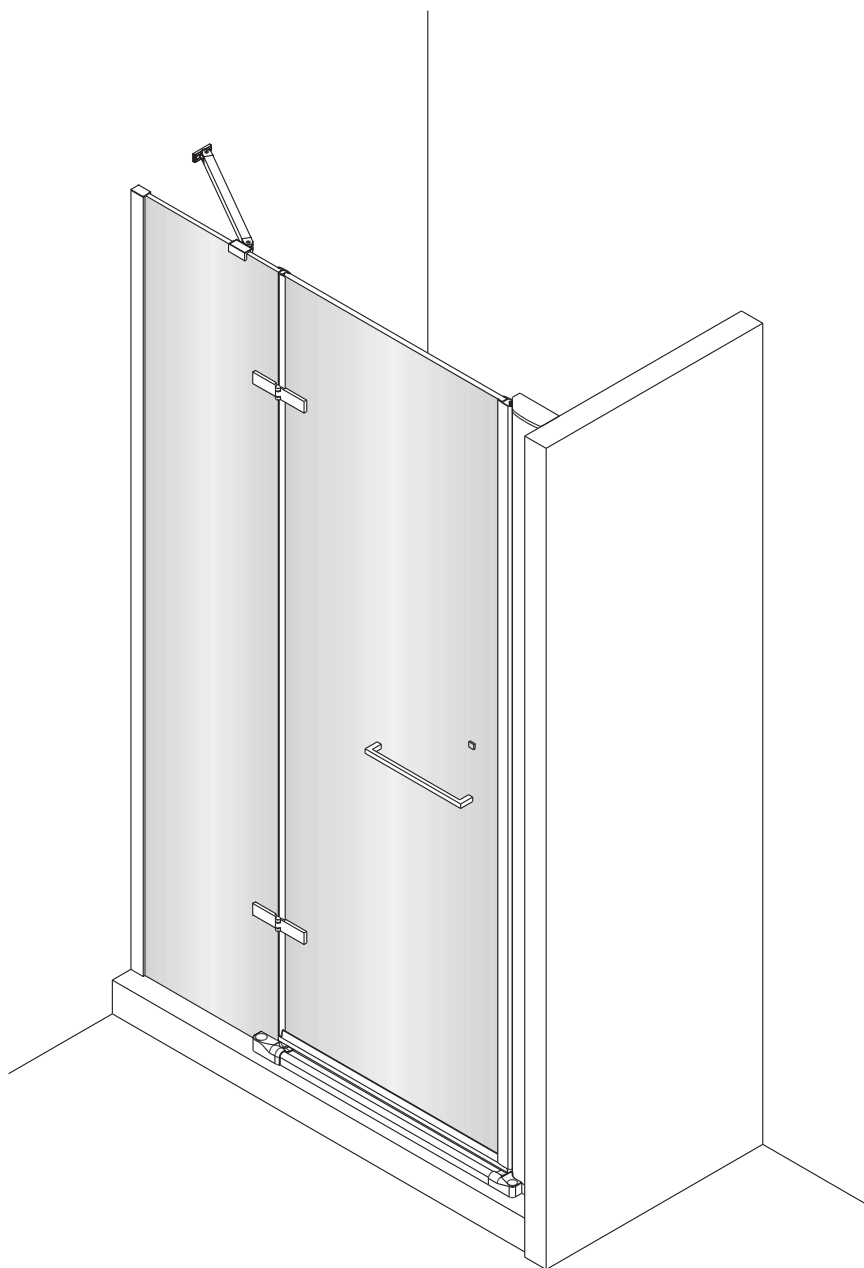
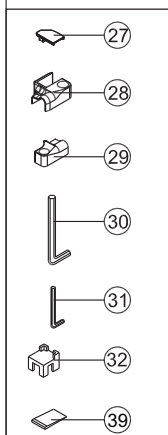
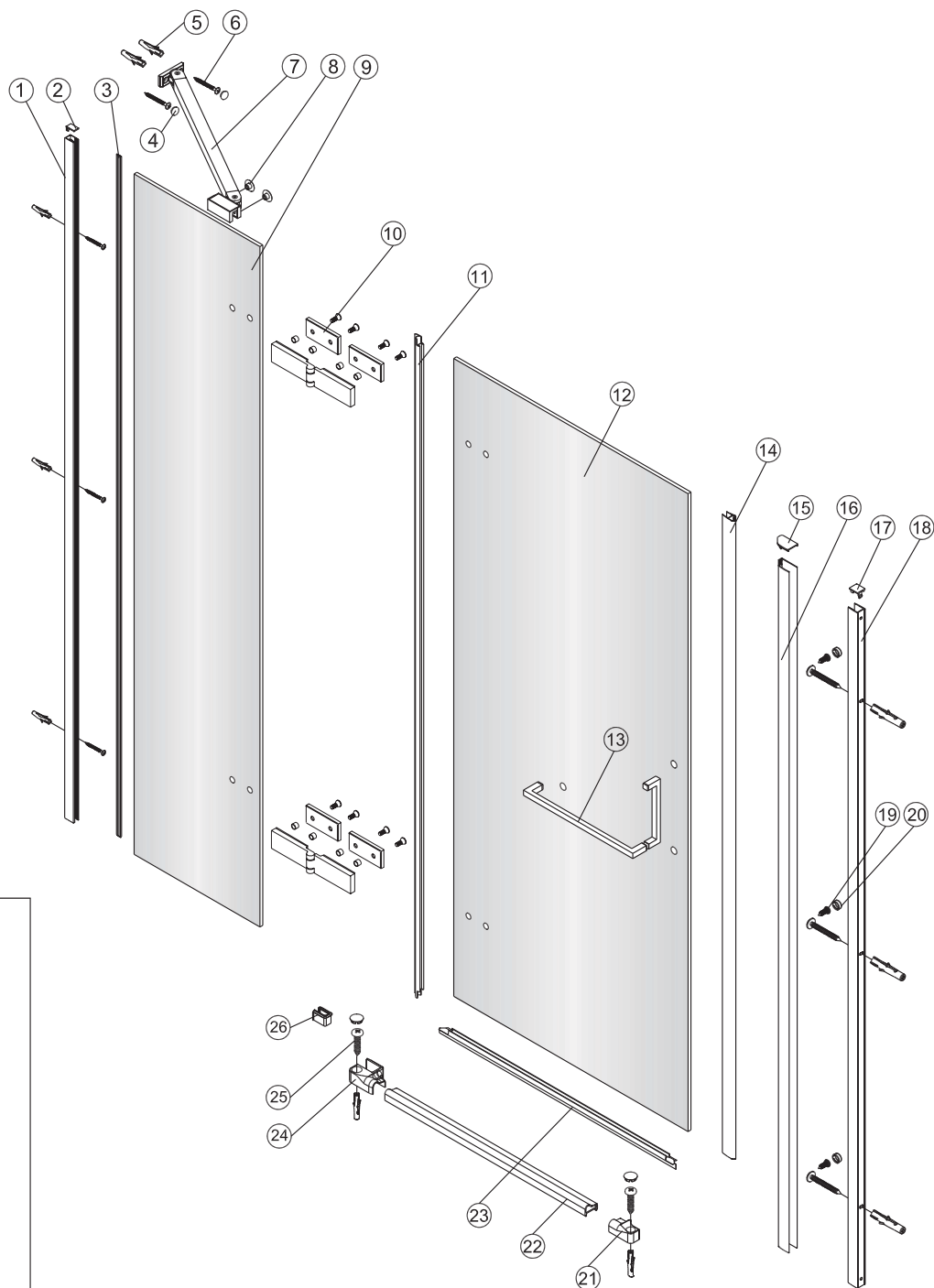


# CAP Instruction Manual

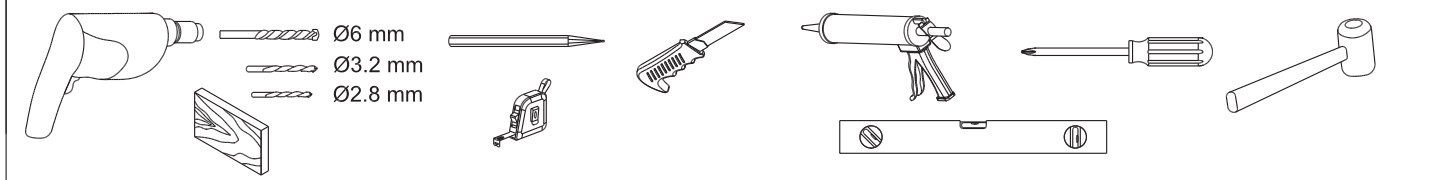


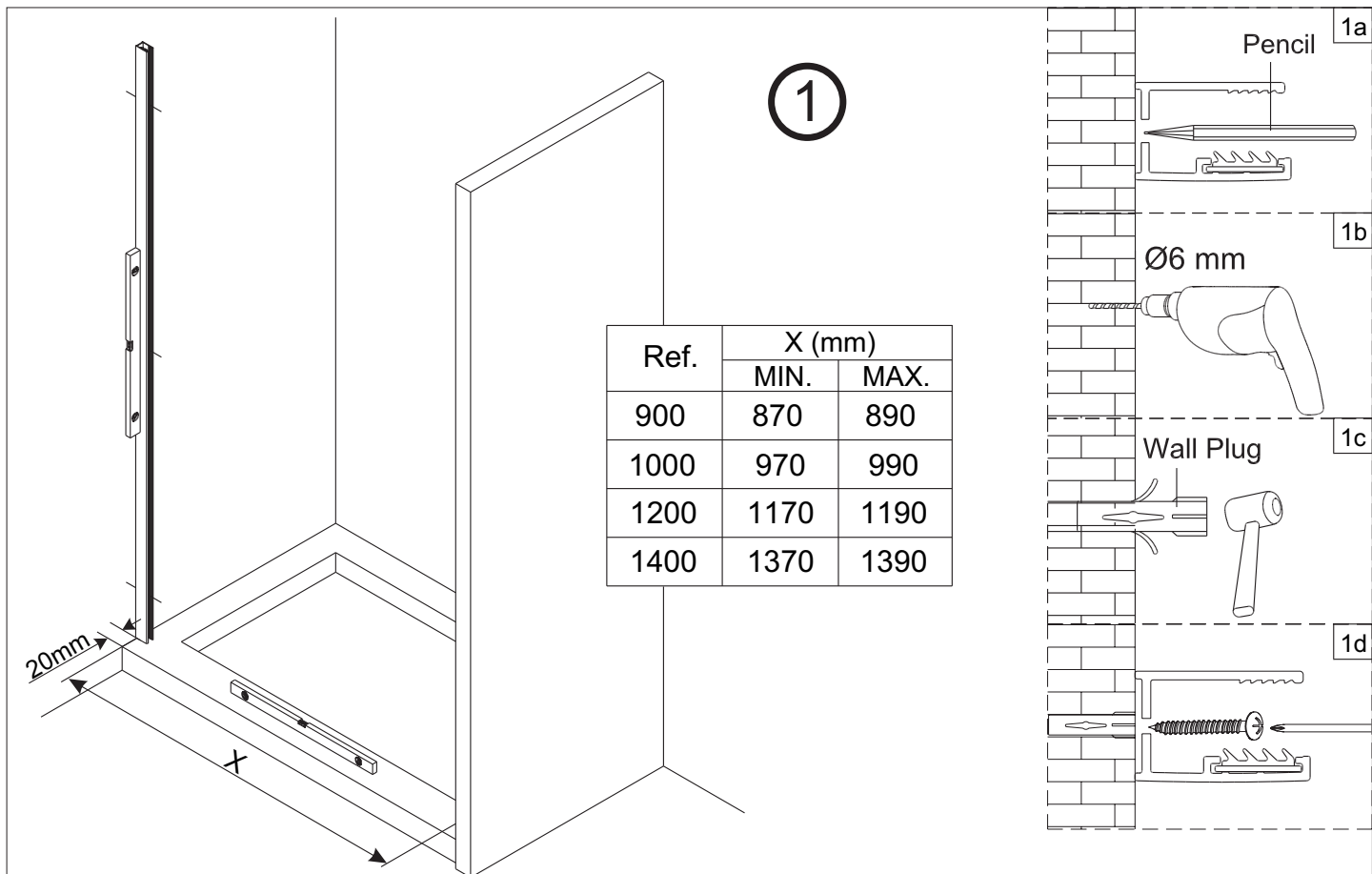
**CAUTION ! Tempered glass, handle with care!**

**No collision to the four corners in case of crazing.**



1 x1	2 x1	3 x1	4 x4	5 x10	6 x8 ST 4x40	7 x1	8 x2	9 x1	10 x2	11 x1
12 x1	13 x1	14 x1	15 x1	16 x1	17 x1	18 x1	19 x3 ST 3.5x10	20 x3	21 x1	22 x1
23 x1	24 x1	25 x2 ST 4x30	26 x1	27 x1	28 x1	29 x1	30 x1 4mm	31 x1 2mm	32 x1	39 x2

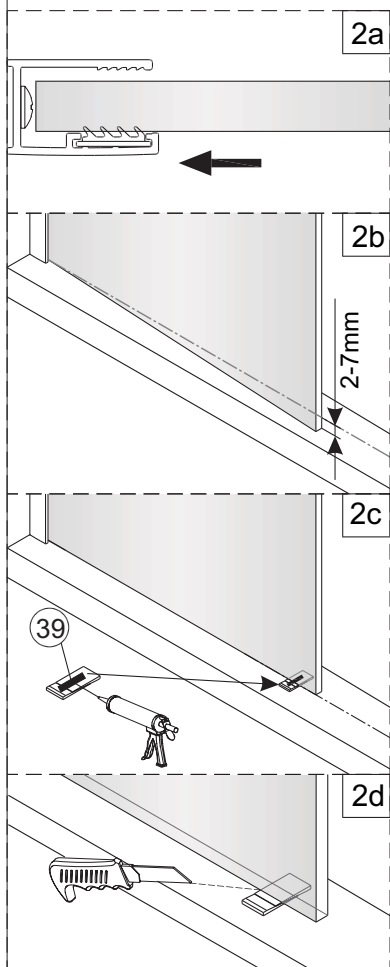




②



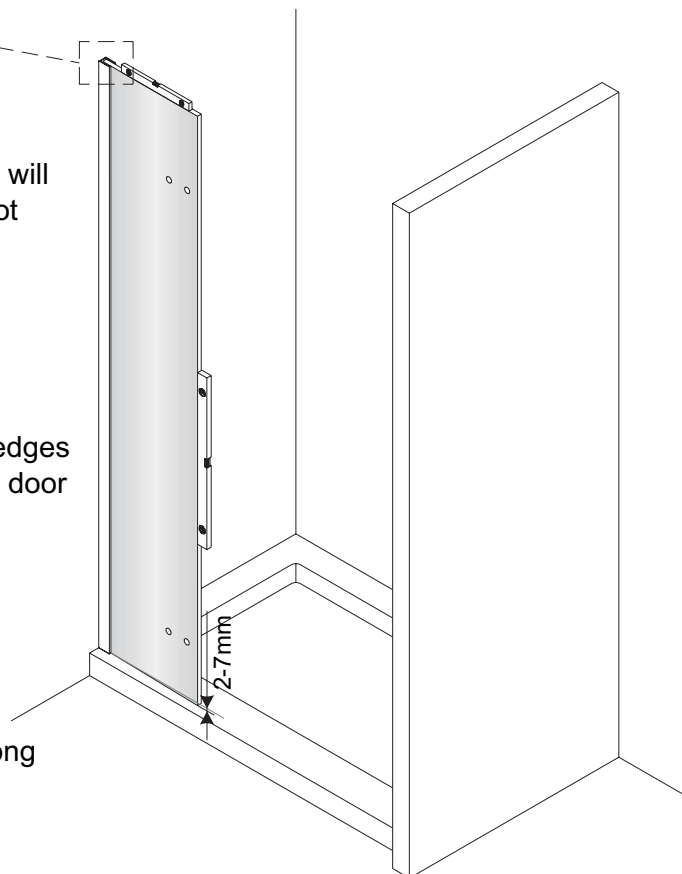
This side with easy clean treatment, please put this side to inside of shower enclosure.

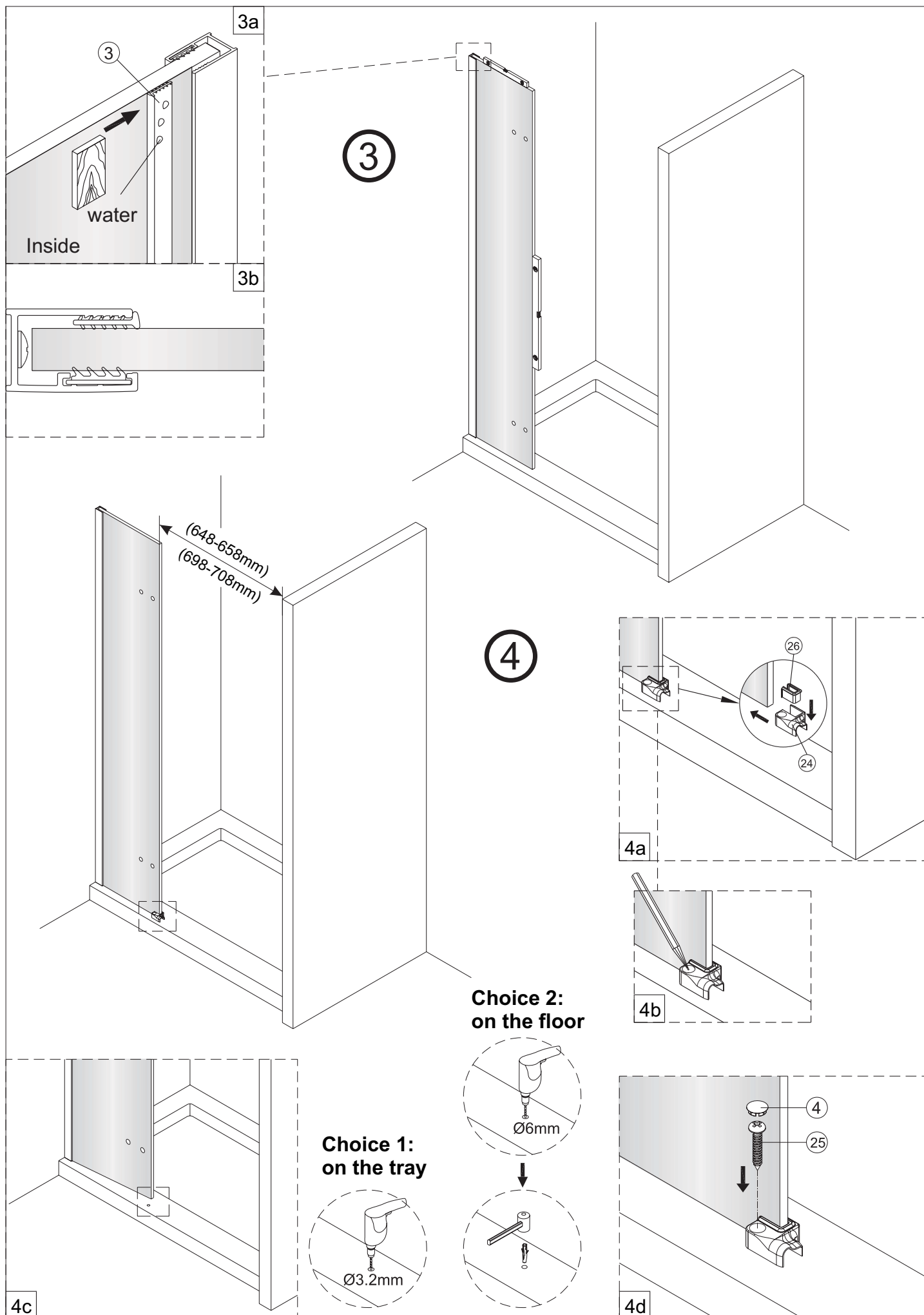


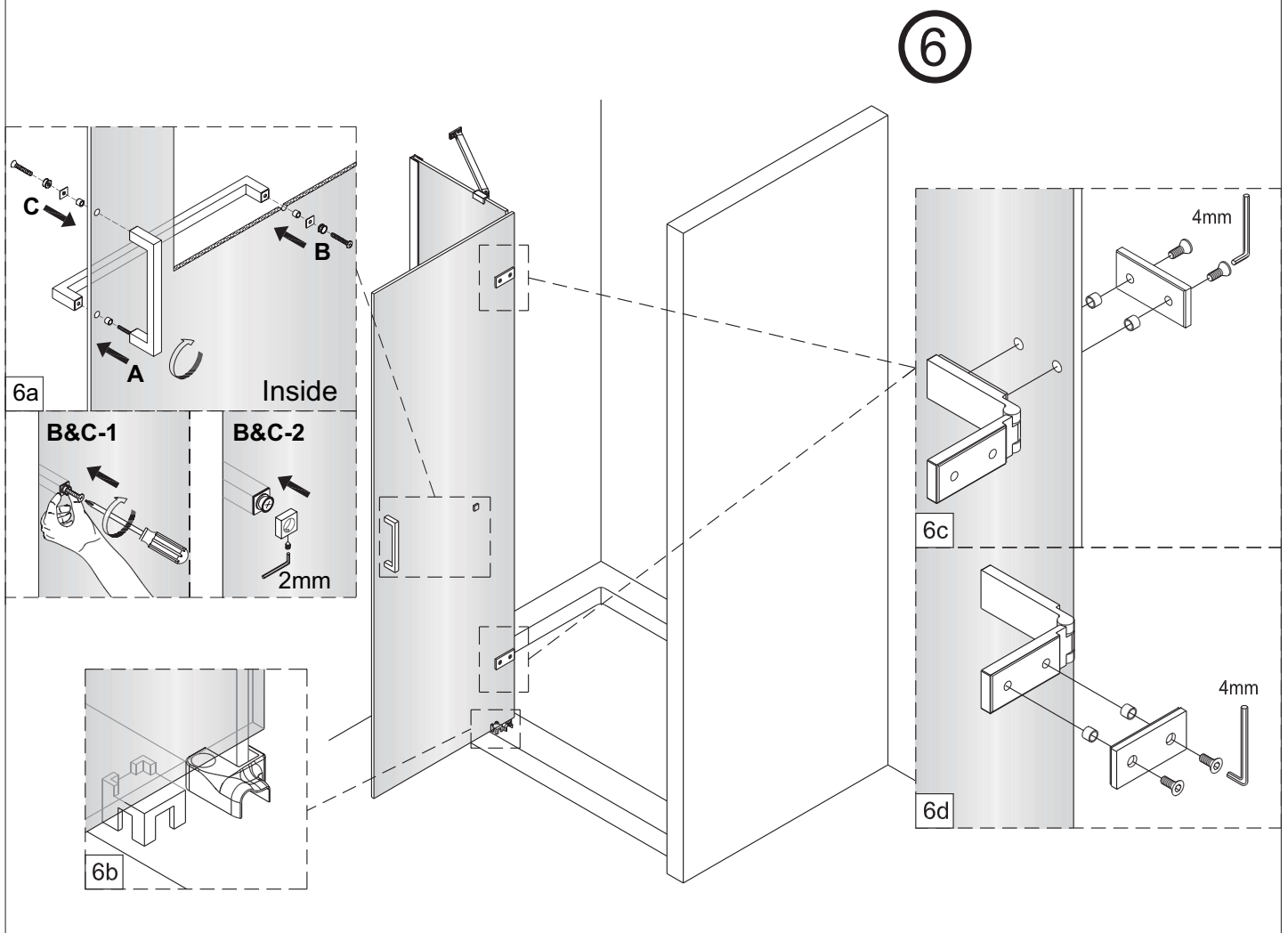
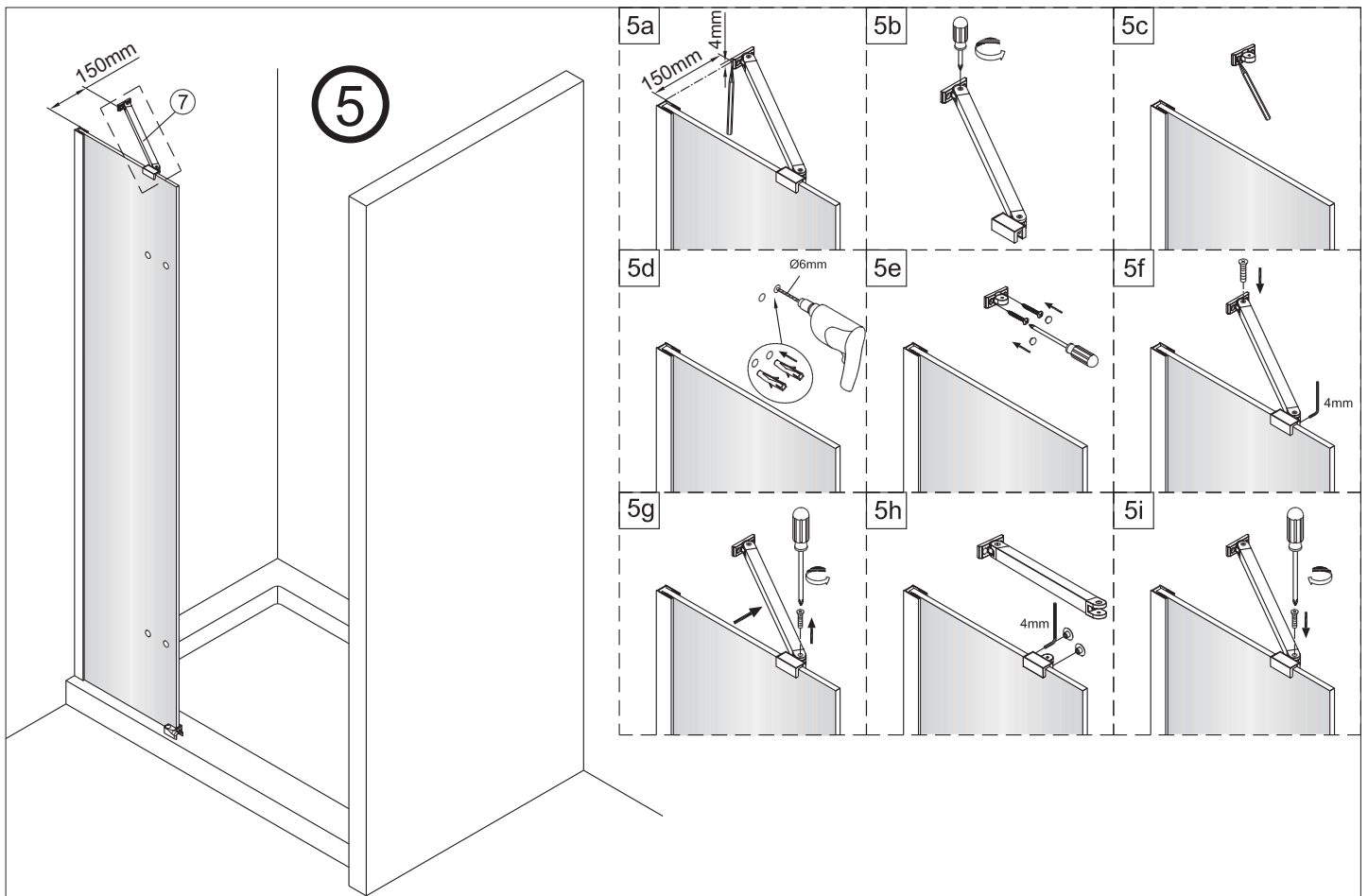
The setting wedge(No.39) will be needed if the door is not level in 2-7mm.

Put silicone on the two wedges and place them under the door to level the door.

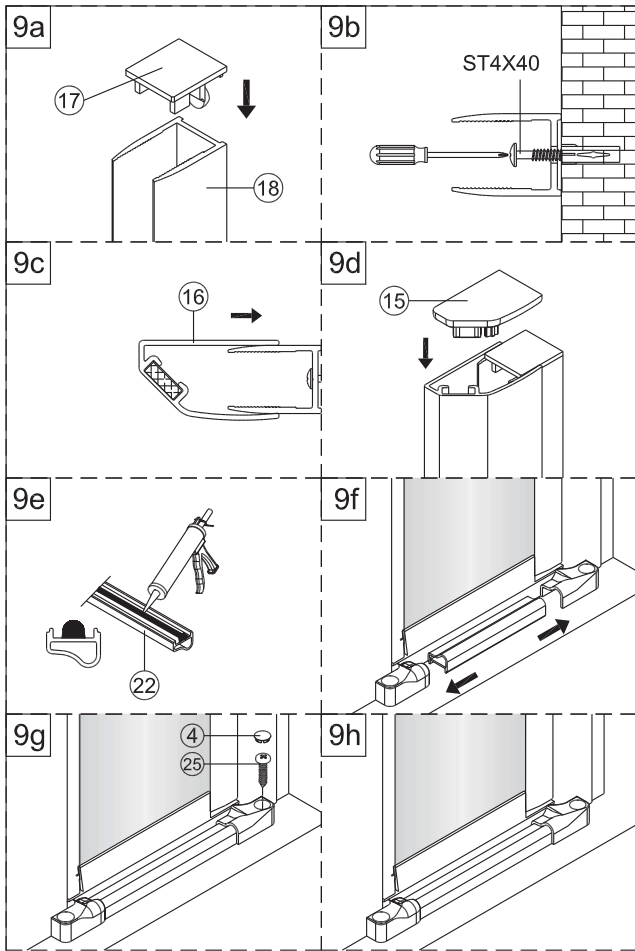
Cut the redundant part along the rim of glass.



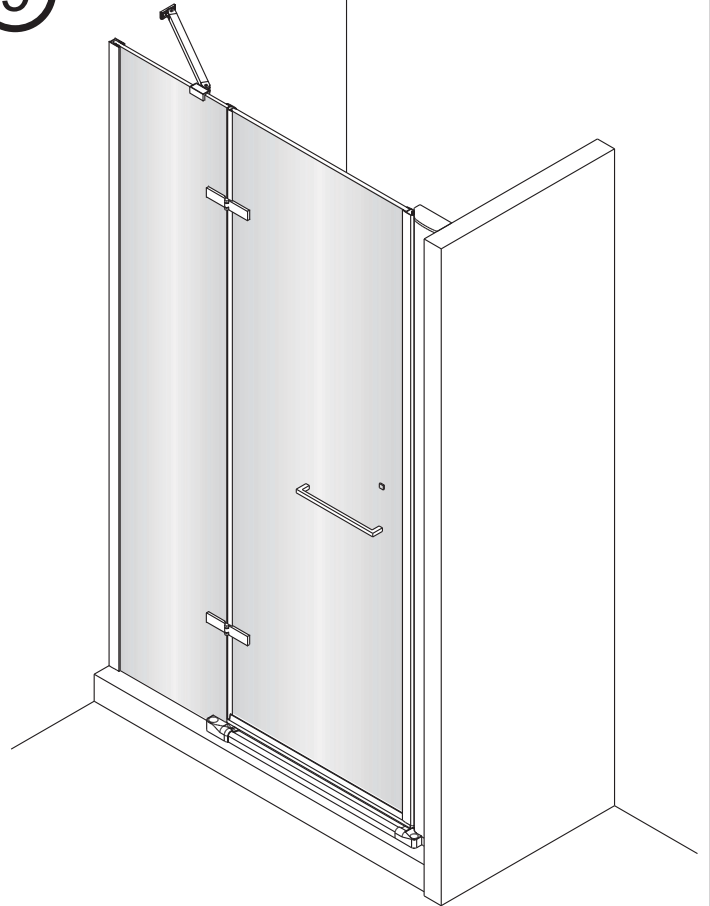




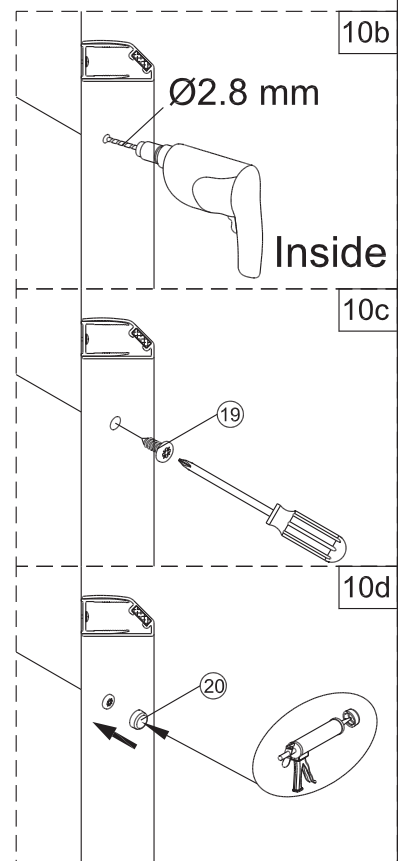
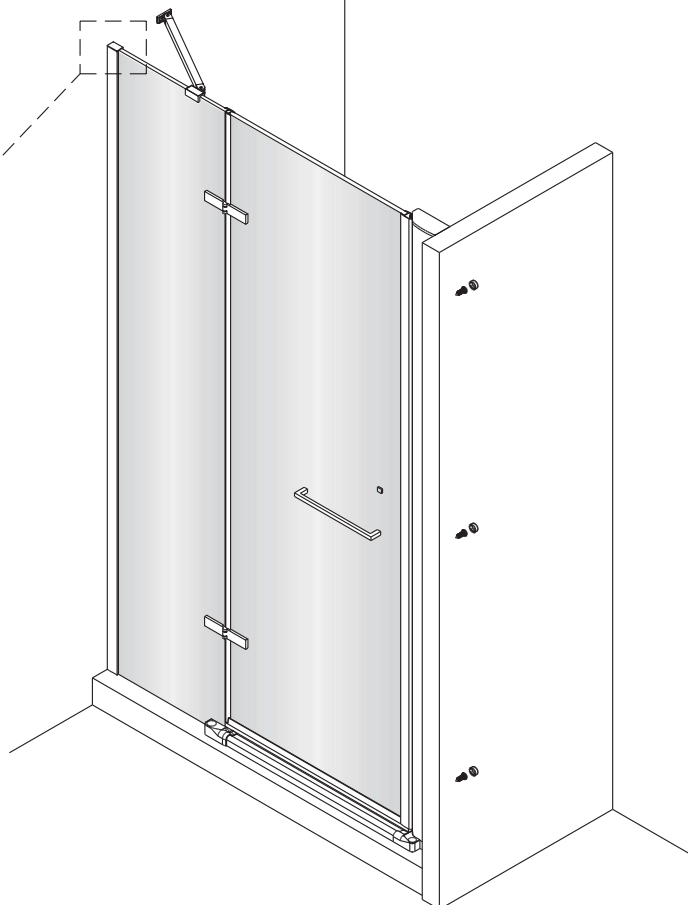
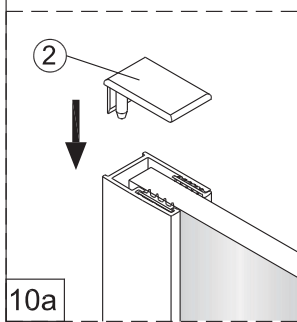




9



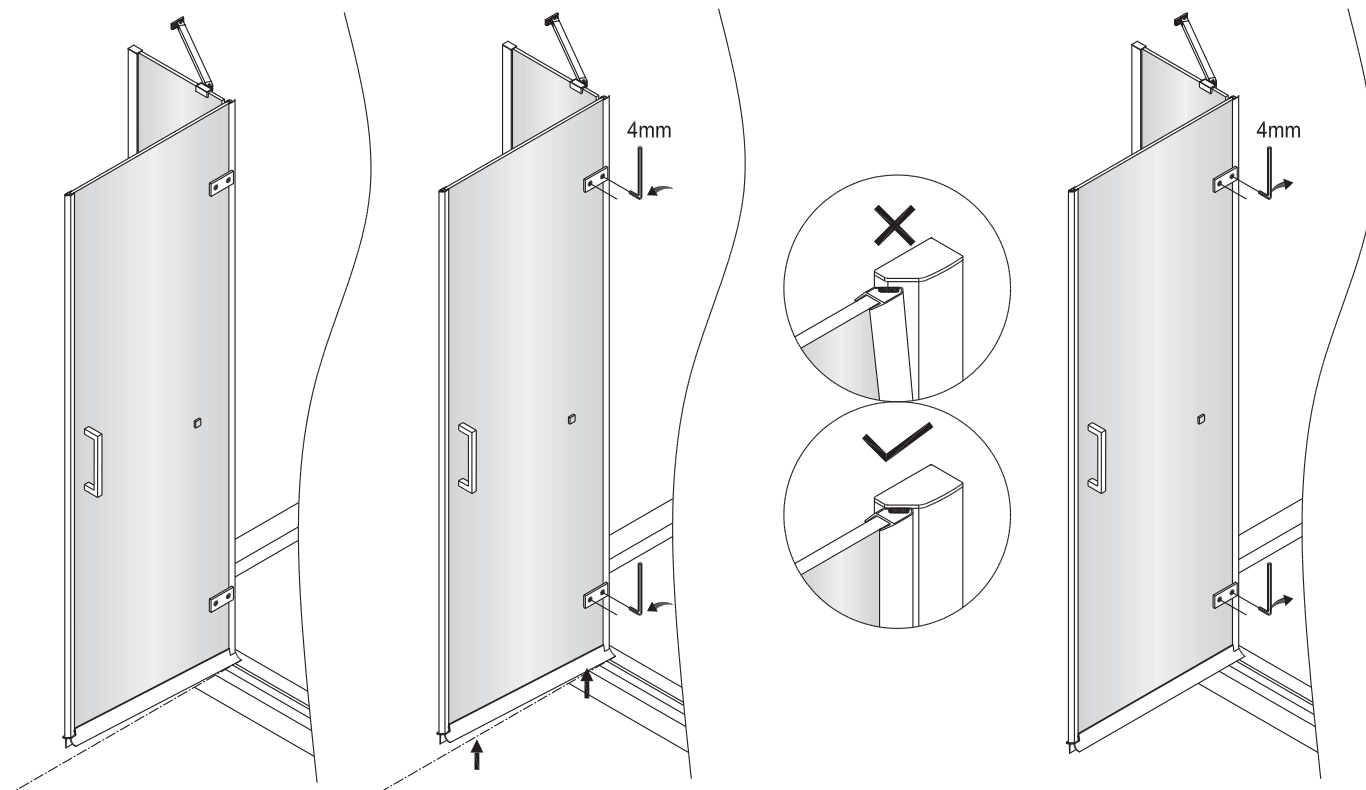
10





**Make sure the hinges have been tightened securely during installation.**

**Only if adjustment is required loosen hinge to adjust door square, and then tighten hinge to secure.**



**11**

